

Station 11

Westminster - 1,334 SF, Units 303
(balcony), 403, 503

2 Bedroom/2 Bathroom Flat

Rent (per resident) w/Balcony

2 Residents
\$875(ea.)

3 Residents
\$635(ea.)

4 Residents
\$515(ea.)

Rent (per resident) w/o Balcony

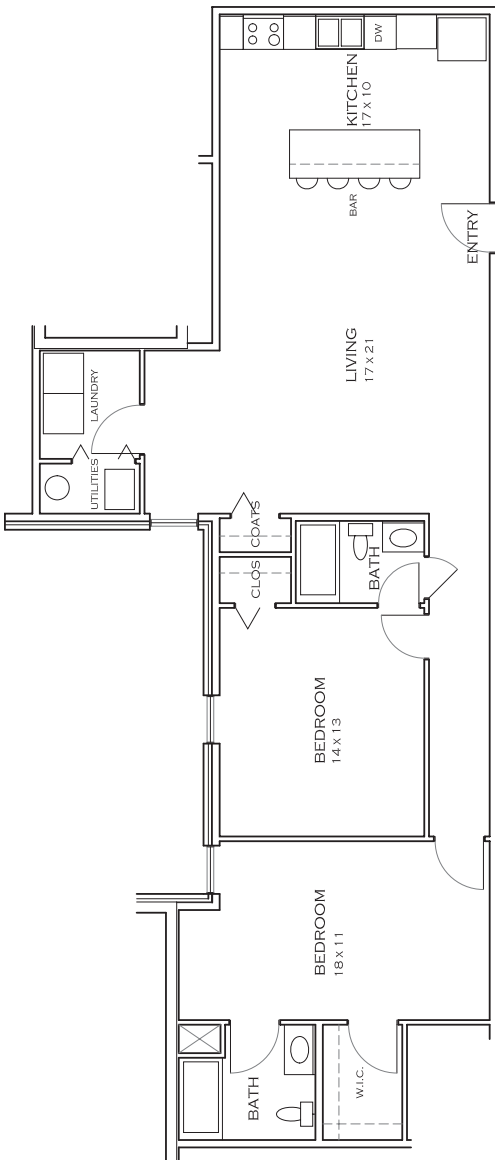
2 Residents
\$825(ea.)

3 Residents
\$600(ea.)

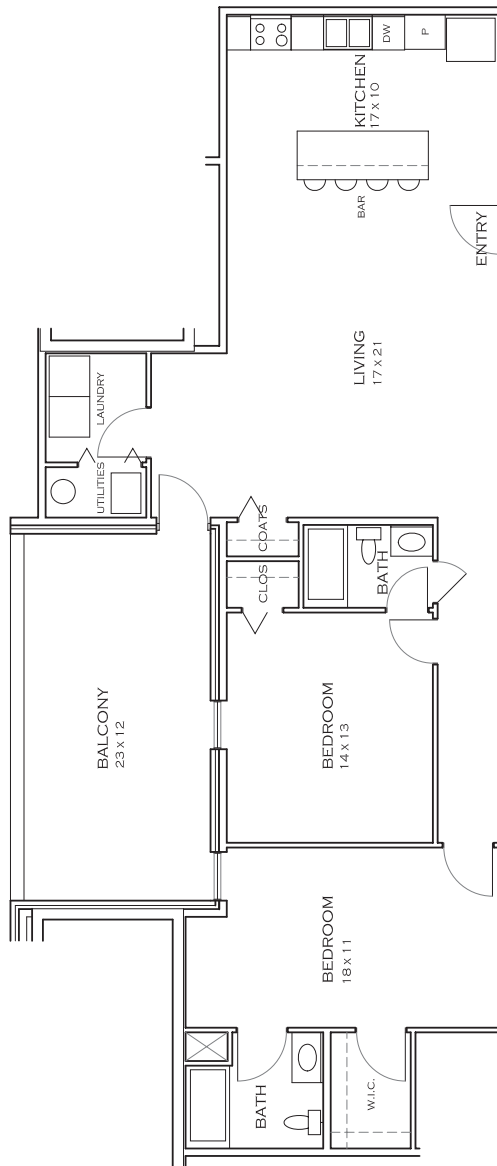
4 Residents
\$490(ea.)

* floor plans may vary

WITHOUT BALCONY



WITH BALCONY



APARTMENT AMENITIES

- Central air conditioning
- Walk-in closet
- Dishwasher
- Garbage disposal
- Microwave
- Stainless steel appliances
- Granite countertops
- Ceiling fans
- Washer & Dryer included

BUILDING AMENITIES

- Storage facilities
- City bus route
- Handicapped accessible
- On and off site parking
- Cleaning services available

UTILITIES INCLUDED

- Cable TV
- High speed internet
- Trash removal
- Water & sewage



www.mystation11.com

701 N College Avenue | Bloomington IN 47403 | p 812 330 4108 | f 812 336 5897

info@mystation11.com